



# SANDBERG MACHINE

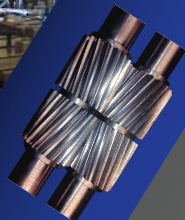
Made in America

Specializing in manufacturing a diverse range of products and sizes - small to oversized, as well as prototyping or high volume manufacturing. We also perform reverse engineering or re-fabricating of worn/outdated parts and components, which often yield better quality and reliability than the OEM.



We've been in the  
manufacturing  
industry...

OVER  
**43**  
Years

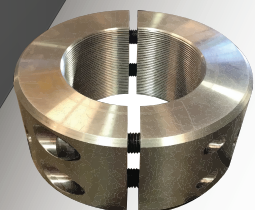
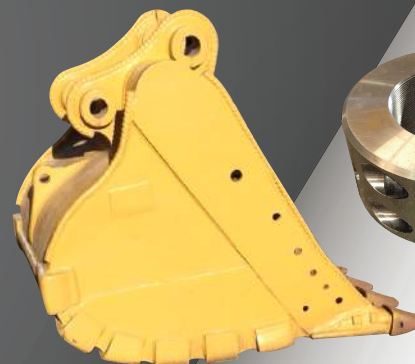
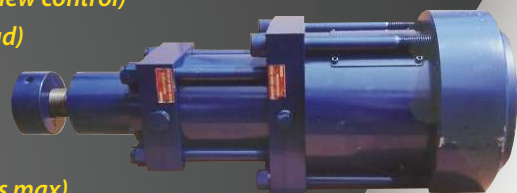


## CAPABILITIES

Your own machine shop ...there when you need us!



- > 3 Horizontal Boring Mills (4" bar, 72" w X 60" h)
- > 11 Vertical Millers (28" X 96" table travel)
- > 6 Horizontal Millers (40" table travel)
- > 4 Vertical CNC Machining Centers (30" X 45" X 20" h)
- > 1 Horizontal CNC Machining Center (60" h X 84" w window for thrd-milling & 4th axis)
- > 11 Engine Lathes (74" in gap, 36" over cross slide, 44" over ways, 192" lg)
- > 3 CNC Lathes (23" over ways 16.5" over cross slide, 72" btw centers)
- > 1 CNC Vertical Turret Lathe (66" dia w/ new control)
- > 4 Turret Lathes (24" swing, 6.75" through head)
- > 2 Vertical Turret Lathes (60" dia x 30" h)
- > 2 O.D. Grinders (14" dia X 40" or 12" dia X 72")
- > 5 Surface Grinders (14" X 60")
- > 3 Blanchard Grinders (54" dia chuck, 60" cross corners max)
- > 2 Production Saws (12" dia x 6" x 12" rectangle)
- > 2 Vertical Saws (18" x 18")
- > 1 Planer (30" x 30" x 120" table w/ hydraulic tracer)
- > 12 Drills (48" radial arm)
- > 1 Shear (1/2 x 120" HRS, 3/8 x 120" SST)
- > 3 Breaks (1/4 x 144", 3/8 x 96", 1/2 x 60")
- > 2 Forcing Presses (300 ton press)
- > 3 Rolls (1/8 x 144", 3/16 x 129", 1/4 x 48", 3/8 x 27" to 14" dia)
- > Broaching (4" x 30" key broach - 10 ton x 48" pull broach)
- > Welding (mig,tig,stick,gas, submerged arc w/ automatic feed)
- > CNC Plasma / Torch Table (Plasma- cuts up to 3/4" thk steel /Table- cuts up to 4" thk steel)



Sandblast & Painting available in-house, and a number of  
finish services can be provided by our reliable vendors

## INDUSTRIES

We keep your business going!

Textiles > Construction > Shipyards > Food > Chemical >  
Electronics > Plastics > Rubber > Powerplants >  
Cosmetics > Defense > Wire & Cable  
...plus many more!



## CALL US FOR A QUOTE

### 401-568-1602

[www.sandbergmachine.com](http://www.sandbergmachine.com)



Mon-Fri  
8am-4:30pm

806 Broncos Hwy  
Mapleville, RI 02839

Serving all of New England